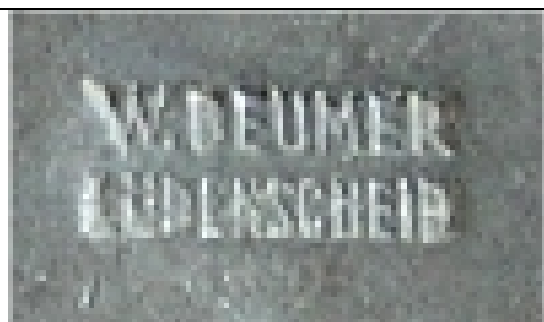


Luftwaffe Pilot Badge (Flugzeugführerabzeichen)

W. Deumer, Lüdenscheid

Description

Instituted 12 August 1935, this Pilot badge manufactured by W.Deumer is most likely an early war-time example. This uses the eagle and wreath which is shared with the Juncker firm. Deumer marked badges can also be found with eagle and wreath which is unique to the Deumer firm.



Prepared by Richard Gordon – August 2005

Details

Height	53 mm	Weight	44.4 gr	Type/Pattern	'Juncker' component
Width	66 mm	Material	Tombac		

Remarks

The distinctive channel cut above the hinge is found on all Deumer-made flight qualification badges. The hinge and catch are also distinctive. The Marker Mark is the same regardless of badge. Any other mark, which varies from the shown, should be treated with extreme caution. The author knows of no examples in zinc for this badge.